

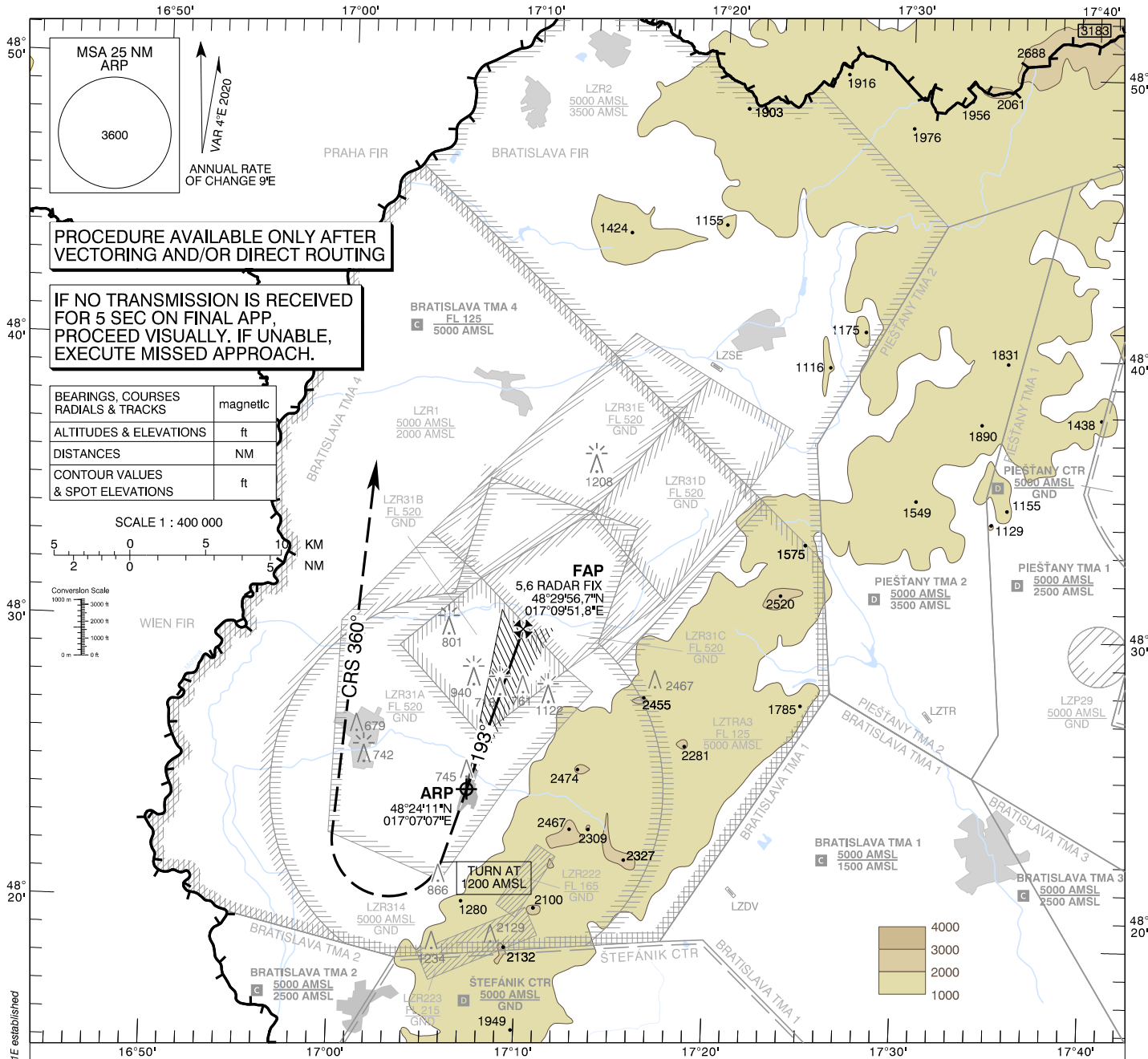
**INSTRUMENT  
APPROACH  
CHART - ICAO**

**TRANSITION ALTITUDE**  
10 000 ft

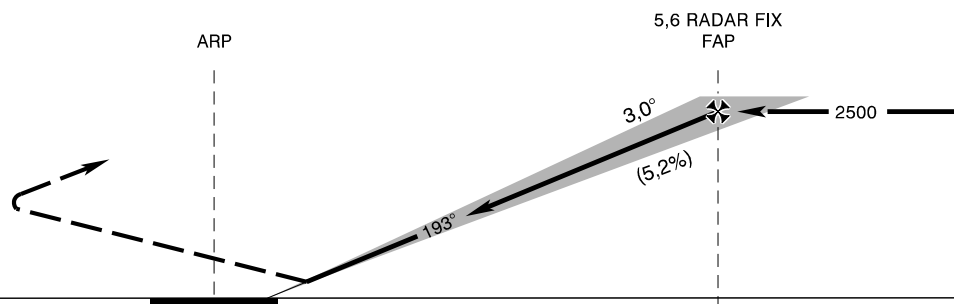
AD ELEV 689 - 25 hPa  
THR RWY 19 ELEV 686 - 25 hPa

**MALACKY PRECISION 127,150**  
**MALACKY RADAR 120,750 (259,625)**  
**MALACKY TOWER 129,575 (120,750)**

**MALACKY (LZMC)  
PAR RWY 19  
ACFT CAT A/B/C/D**

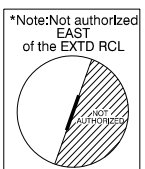


**MISSED APPROACH**  
Climb STRAIGHT AHEAD, at 1200 AMSL turn RIGHT to CRS 360°, climbing to 4000 AMSL, then as directed by RADAR CONTROLLER. MAX IAS 185 kt until established on CRS 360°. No turn before ARP.



**TCH 56,8**  
THR RWY 19 ELEV 686 - 25 hPa  
NM to/from THR RWY 19

OCA (OCH)	ASC	A	B	C	D
Straight - in Approach	2,5%	ft 951 (265)	963 (277)	971 (285)	982 (296)
Circling (* see Note)		ft 1120 (431)	1190 (501)	1650 (961)	1810 (1121)
VIS		m 1800	2800	3600	4600



RADAR FIX	NM	7,0	6,0	5,0	4,0	3,0	2,0	1,0
ALTITUDES	ft	2958	2628	2300	1974	1649	1326	1005

Ground speed	kt	70	90	100	120	140	160	180
Rate of descent (5,2%)	ft/min	372	478	531	637	743	849	955

CHANGES: LZR131A and LZR131B withdrawn; new LZR31B, LZR31D, LZR31E established